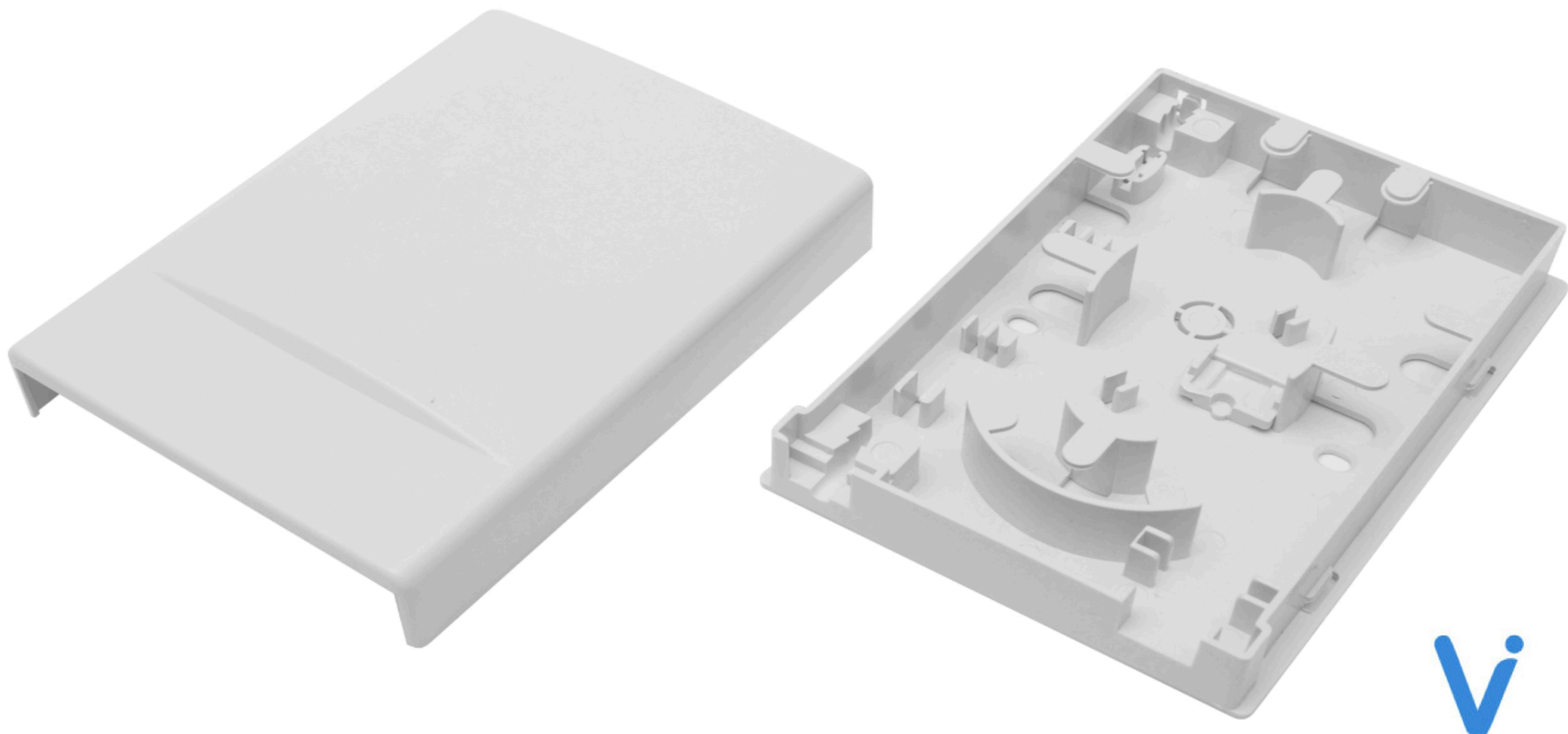


Vertex Distribution Boxes

Vertex Surface OptiBox FTTH

The Vertex Networks OptiBox FTTH is a versatile and reliable fiber optic surface box designed for seamless Fiber to the Home (FTTH) installations.



Design and Usability

- Compact and lightweight design
- Made of durable ABS material
- Easy installation with included fixing screws
- Integrated winders to prevent fiber stretching
- Aesthetic white color for seamless integration

Applications

- Fiber to the Home (FTTH) installations
- Ideal for residential and small office setups
- Suitable for single port SC/APC connector use

Specifications

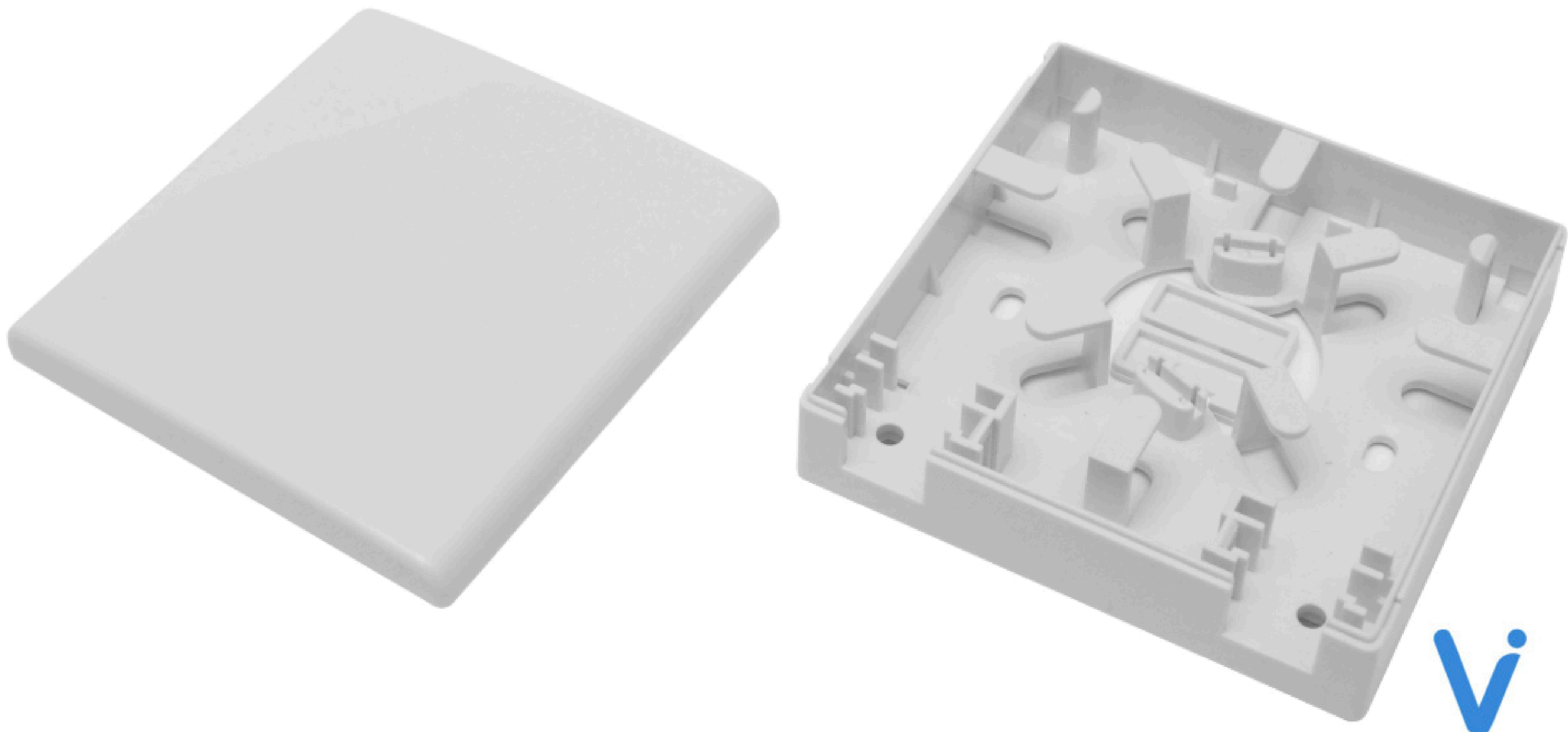
- **Single port output**
- **1 SC/APC connector**
- **Insertion loss:** ≤ 0.30 dB
- **Repeatability:** ≤ 0.10 dB
- **Changeability:** ≤ 0.20 dB
- **Operating temperature range:** -25°C to $+70^{\circ}\text{C}$
- **Dimensions:** 121 mm (H) x 88 mm (L) x 25 mm (W)
- **Weight:** 66 g

The Vertex Advantage

The Vertex Networks OptiBox FTTH is a versatile and reliable fiber optic surface box designed for seamless Fiber to the Home (FTTH) installations. This compact and lightweight surface box, constructed from durable ABS material, ensures easy and secure installation with the provided fixing screws. Its integrated winders prevent fiber stretching, maintaining the integrity of your connections. The OptiBox's sleek white design allows it to blend effortlessly into any environment, making it an ideal choice for residential and small office setups. .

Vertex Networks TermiBox FTTH

The Vertex Networks OptiBox FTTH is a versatile and reliable fiber optic surface box designed for seamless Fiber to the Home (FTTH) installations.



Design and Usability

- Compact, square design for easy installation
- Constructed from durable ABS material
- Includes fixing screws for secure mounting
- Built-in winders to prevent fiber stretching
- Sleek white color for aesthetic appeal

Applications

- Fiber to the Home (FTTH) installations
- Ideal for residential and small office setups
- Suitable for single port SC/APC connector use

Specifications

- **Dual port outputs**
- **2 SC/APC connectors**
- **Insertion loss:** ≤ 0.30 dB
- **Repeatability:** ≤ 0.10 dB
- **Changeability:** ≤ 0.20 dB
- **Operating temperature range:** -25°C to $+70^{\circ}\text{C}$
- **Dimensions:** 86 mm (H) x 86 mm (L) x 27 mm (W)
- **Weight:** 45 g

The Vertex Advantage

The Vertex Networks TermiBox FTTH is an efficient and durable fiber optic termination box designed specifically for Fiber to the Home (FTTH) installations. This compact, square termination box is made from high-quality ABS material, ensuring longevity and reliability. It features an easy installation process with the included fixing screws, and its integrated winders effectively prevent fiber stretching, maintaining optimal connection performance.

Vertex Networks QuadBox FTTH

The Vertex Networks OptiBox FTTH is a versatile and reliable fiber optic surface box designed for seamless Fiber to the Home (FTTH) installations.



Design and Usability

- Robust and spacious design for versatile installation
- Made of high-quality ABS material
- Includes fixing screws for secure mounting
- Integrated winders to prevent fiber stretching
- Elegant white color for aesthetic integration

Applications

- Ideal for Fiber to the Home (FTTH) installations
- Suitable for residential, commercial, and small office environments
- Supports four SC/APC connectors for multiple connections

Specifications

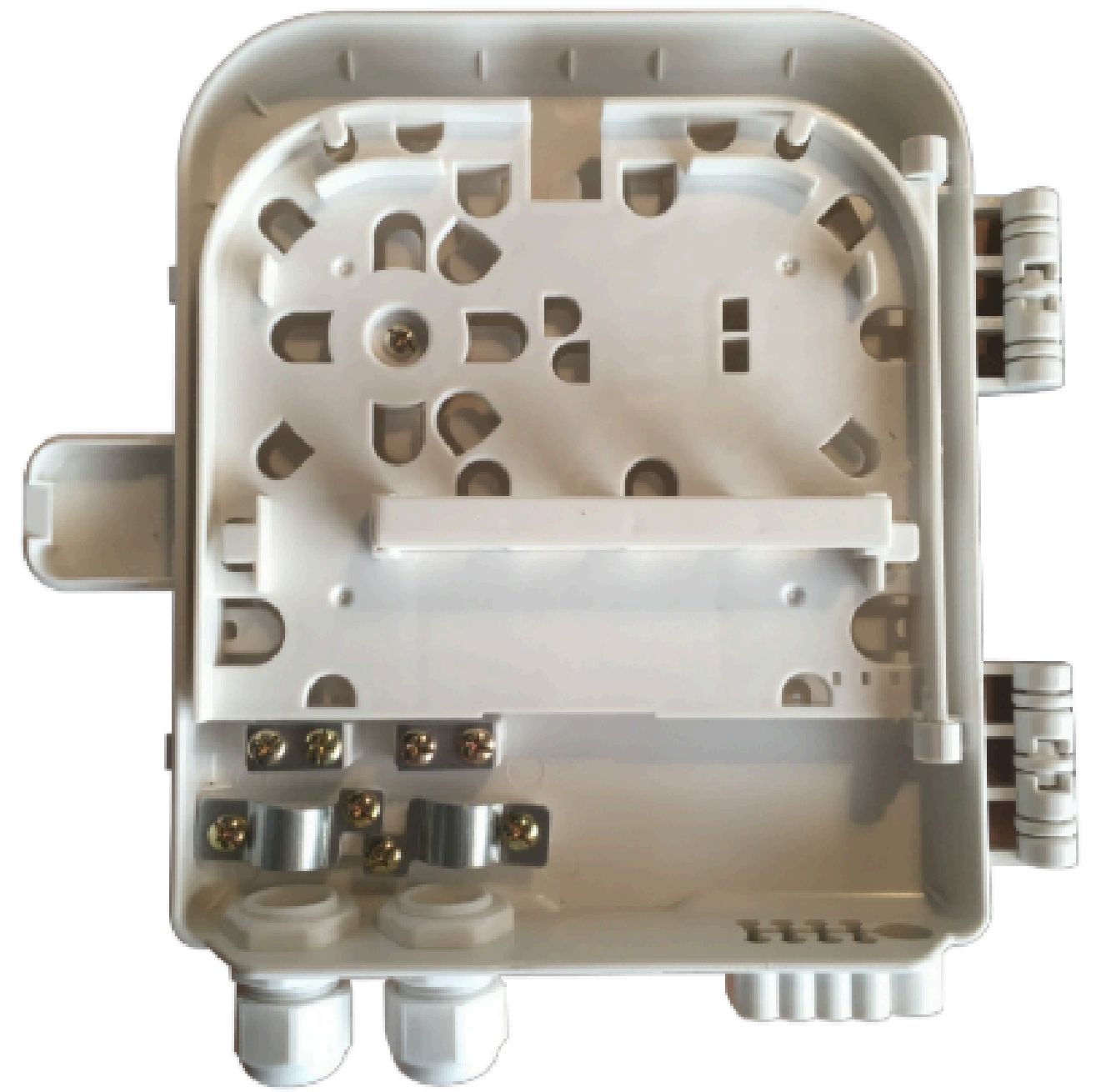
- **Four port outputs**
- **4 SC/APC connectors**
- **Single mode fiber type**
- **Insertion loss:** ≤ 0.30 dB
- **Repeatability:** ≤ 0.10 dB
- **Changeability:** ≤ 0.20 dB
- **Operating temperature range:** -25°C to $+70^{\circ}\text{C}$
- **Dimensions:** 110 mm (H) x 150 mm (L) x 30 mm (W)
- **Weight:** 112 g

The Vertex Advantage

The Vertex Networks QuadBox FTTH is a versatile and robust fiber optic surface box designed for efficient Fiber to the Home (FTTH) installations. Constructed from high-quality ABS material, this spacious surface box ensures durability and long-term reliability. It features an easy installation process with included fixing screws, and the integrated winders effectively prevent fiber stretching, maintaining optimal performance. The QuadBox's elegant white design seamlessly fits into any residential, commercial, or small office setting.

Vertex Networks DistBox FTTH

The Vertex Networks OptiBox FTTH is a versatile and reliable fiber optic surface box designed for seamless Fiber to the Home (FTTH) installations.



Design and Usability

- Durable plastic ABS construction
- Includes all necessary accessories for easy assembly
- Suitable for indoor and outdoor mounting
- Completely watertight and weatherproof with IP66 protection
- Provides radius of curvature protection

Applications

- Ideal for Fiber to the Home (FTTH) installations
- Suitable for CATV and local area networks
- Can host a connectorized splitter

Specifications

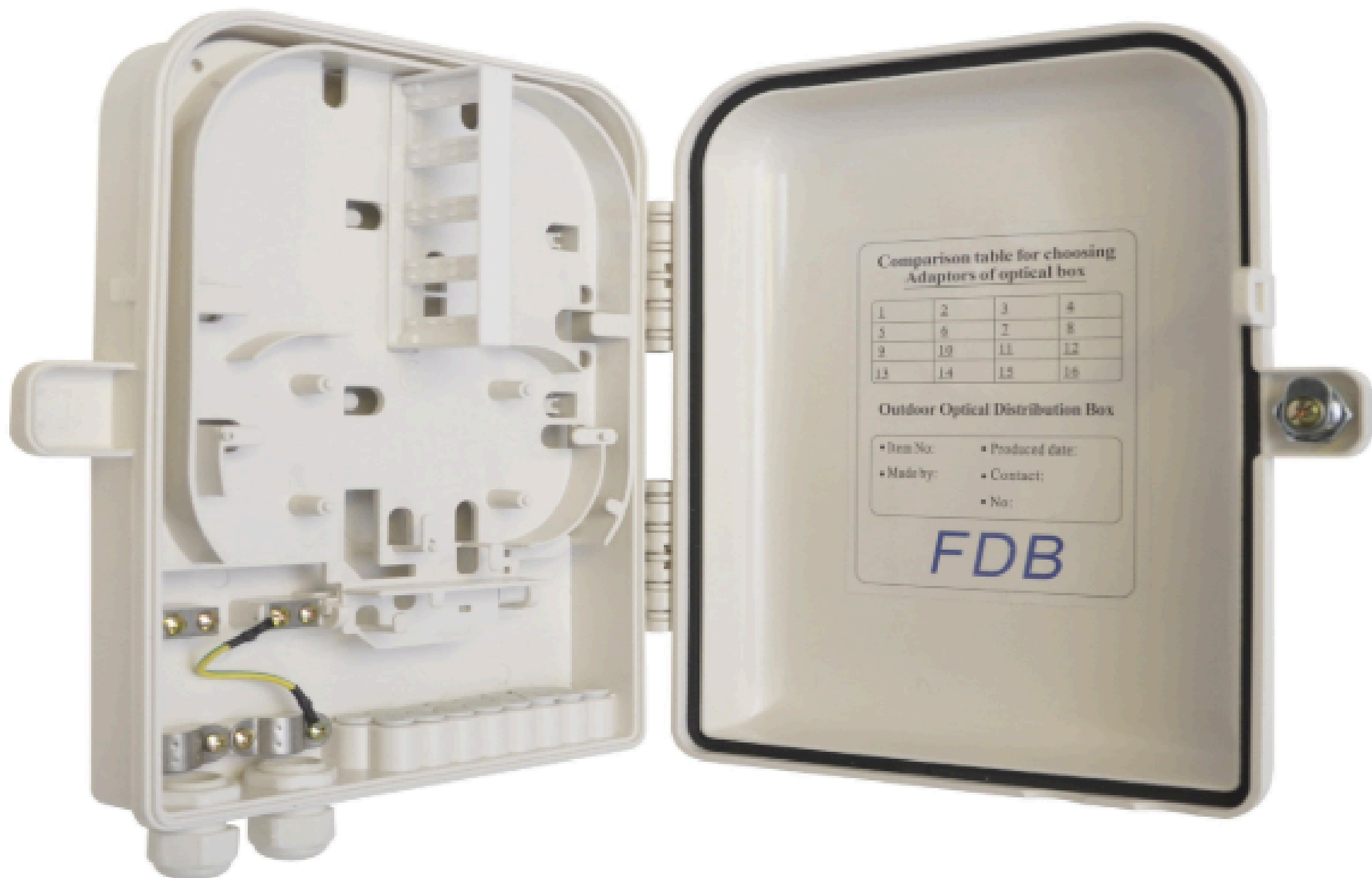
- Two input ports
- Eight output ports
- Uses SC connectors
- Capacity for eight fusions
- Operating temperature range: -40°C to +60°C
- Dimensions: 250 mm (H) x 180 mm (L) x 50 mm (W)
- Weight: 500 g
- Compliant with ICT2 standards

The Vertex Advantage

The Vertex Networks DistBox FTTH is a robust and versatile fiber optic distribution box designed for efficient Fiber to the Home (FTTH) installations. Constructed from durable plastic ABS, this distribution box is suitable for both indoor and outdoor mounting, offering complete watertight and weatherproof protection with an IP66 rating. It features two input ports and eight output ports, providing ample capacity for fiber optic segregation and distribution.

Vertex Networks HexaBox FTTH

The Vertex Networks OptiBox FTTH is a versatile and reliable fiber optic surface box designed for seamless Fiber to the Home (FTTH) installations.



Design and Usability

- Sturdy plastic ABS construction for durability
- Includes all necessary accessories for straightforward assembly
- Suitable for both indoor and outdoor mounting
- Fully watertight and weatherproof with IP65 protection
- Provides radius of curvature protection

Applications

- Ideal for Fiber to the Home (FTTH) installations
- Suitable for CATV and local area networks
- Can host a connectorized splitter

Specifications

- **Two input ports**
- **Sixteen output ports**
- **Utilizes SC connectors**
- **Capacity for sixteen fusions**
- **Operating temperature range:** -40°C to +60°C
- **Dimensions:** 292 mm (H) x 215 mm (L) x 95 mm (W)
- **Weight:** 1.06 kg
- **Compliant with ICT2 standards**
-

The Vertex Advantage

The Vertex Networks HexaBox FTTH is a high-capacity fiber optic distribution box designed for seamless Fiber to the Home (FTTH) installations. Crafted from durable plastic ABS, this robust distribution box ensures longevity and reliability in both indoor and outdoor environments. The HexaBox is fully watertight and weatherproof with an IP65 rating, making it ideal for various weather conditions. It features two input ports and sixteen output ports, providing extensive capacity for fiber optic segregation and distribution. The box supports SC connectors and includes all necessary accessories for easy assembly.

Vertex Networks OctaBox FTTH

The Vertex Networks OptiBox FTTH is a versatile and reliable fiber optic surface box designed for seamless Fiber to the Home (FTTH) installations.



Design and Usability

- Durable plastic ABS construction for reliable performance
- Includes all necessary accessories for easy installation
- Suitable for both indoor and outdoor mounting
- Fully watertight and weatherproof with IP55 protection
- Provides radius of curvature protection

Applications

- Ideal for Fiber to the Home (FTTH) installations
- Suitable for CATV and local area networks
- Capable of hosting a connectorized splitter

Specifications

- **Two input ports**
- **Twenty-four output ports**
- **Utilizes SC connectors**
- **Capacity for twenty-four fusions**
- **Operating temperature range:** -40°C to +60°C
- **Dimensions:** 308 mm (H) x 230 mm (L) x 100 mm (W)
- **Weight:** 1.1 kg
- **Compliant with ICT2 standards**

The Vertex Advantage

The Vertex Networks OctaBox FTTH is a high-capacity fiber optic distribution box engineered for efficient Fiber to the Home (FTTH) installations. Constructed from robust plastic ABS, this durable distribution box ensures long-lasting performance in both indoor and outdoor environments. The OctaBox is fully watertight and weatherproof with an IP55 rating, providing reliable protection against the elements. It features two input ports and twenty-four output ports, offering extensive capacity for fiber optic segregation and distribution.

Vertex Networks MegaBox FTTH

The Vertex Networks OptiBox FTTH is a versatile and reliable fiber optic surface box designed for seamless Fiber to the Home (FTTH) installations.



Design and Usability

- Durable plastic ABS construction for long-term reliability
- Includes all necessary accessories for straightforward assembly
- Suitable for both indoor and outdoor mounting
- Fully watertight and weatherproof with IP68 protection
- Provides radius of curvature protection

Applications

- Ideal for Fiber to the Home (FTTH) installations
- Suitable for CATV and local area networks
- Capable of hosting a connectorized splitter

Specifications

- Two input ports
- Forty-eight output ports
- Utilizes SC connectors
- Capacity for forty-eight fusions
- Operating temperature range: -40°C to +60°C
- Dimensions: 420 mm (H) x 335 mm (L) x 130 mm (W)
- Weight: 1.18 kg
- Compliant with ICT2 standards
-

The Vertex Advantage

The Vertex Networks MegaBox FTTH is a robust and high-capacity fiber optic distribution box designed for large-scale Fiber to the Home (FTTH) installations. Made from durable plastic ABS, this distribution box ensures reliable performance in both indoor and outdoor environments. The MegaBox is fully watertight and weatherproof with an IP68 rating, making it ideal for various weather conditions. It features two input ports and forty-eight output ports, offering extensive capacity for fiber optic segregation and distribution. The box supports SC connectors and includes all necessary accessories for easy assembly.

Vertex Networks PrimeBox FTTH

The Vertex Networks OptiBox FTTH is a versatile and reliable fiber optic surface box designed for seamless Fiber to the Home (FTTH) installations.



Design and Usability

- Durable plastic ABS construction for long-term reliability
- Includes all necessary accessories for straightforward assembly
- Suitable for both indoor and outdoor mounting
- Fully watertight and weatherproof with IP68 protection
- Provides radius of curvature protection

Applications

- Ideal for Fiber to the Home (FTTH) installations
- Suitable for CATV and local area networks
- Capable of hosting a connectorized splitter

Specifications

- Two input ports
- Forty-eight output ports
- Utilizes SC connectors
- Capacity for forty-eight fusions
- Operating temperature range: -40°C to +60°C
- Dimensions: 420 mm (H) x 335 mm (L) x 130 mm (W)
- Weight: 1.18 kg
- Compliant with ICT2 standards

The Vertex Advantage

The Vertex Networks MegaBox FTTH is a robust and high-capacity fiber optic distribution box designed for large-scale Fiber to the Home (FTTH) installations. Made from durable plastic ABS, this distribution box ensures reliable performance in both indoor and outdoor environments. The MegaBox is fully watertight and weatherproof with an IP68 rating, making it ideal for various weather conditions. It features two input ports and forty-eight output ports, offering extensive capacity for fiber optic segregation and distribution. The box supports SC connectors and includes all necessary accessories for easy assembly.

Vertex Networks MegaBox FTTH

The Vertex Networks OptiBox FTTH is a versatile and reliable fiber optic surface box designed for seamless Fiber to the Home (FTTH) installations.



Design and Usability

- Durable construction for reliable performance
- Wall-mount design for easy installation
- Supports up to 24 splices
- Can accommodate up to 24 SC adapters (not included)
- Includes all necessary accessories for a safe, reliable, and quality installation
- Provides total control over the bend radius of the fiber
- Includes a set of keys for security

Applications

- Ideal for fiber optic distribution in buildings
- Suitable for FTTH installations
- Perfect for both residential and commercial environments

Specifications

- **Minimum bend radius:** 30 mm
- **Flame retardant test:** GB5169.7
- **Working and storage temperature range:** -40°C to +85°C
- **Protection rating:** IP65
- **Dimensions:** 420 mm (H) x 440 mm (L) x 85 mm (W)
- **Weight:** 6.6 kg
- **Compliant with ICT2 standards**

The Vertex Advantage

The Vertex Networks PrimeBox FTTH is a robust and versatile main fiber optic register designed for efficient fiber optic distribution within buildings. Constructed for wall mounting, this register supports up to 24 splices and can accommodate up to 24 SC adapters, making it ideal for both residential and commercial fiber optic installations. The PrimeBox includes all necessary accessories for a safe, reliable, and high-quality installation. It ensures total control over the bend radius of the fiber and comes with a set of keys for added security.

Vertex Networks GigaBox FTTH

The Vertex Networks OptiBox FTTH is a versatile and reliable fiber optic surface box designed for seamless Fiber to the Home (FTTH) installations.



Design and Usability

- Durable metal cabinet with electrostatic lacquer coating
- Designed for wall mounting
- Ensures organized deployment of fibers and optical cables
- Provides protection for secure installation and laying of optical cables
- Protects distribution network fibers and maintains a minimum bend radius

Applications

- Ideal for fiber optic distribution in buildings
- Suitable for FTTH installations
- Perfect for both residential and commercial environments

Specifications

- **Adapter insertion loss:** ≤ 0.2 dB
- **Adapter return loss:** ≥ 55 dB
- **Optical splitter insertion loss:** ≤ 17.4 dB
- **Optical splitter return loss:** ≥ 55 dB
- **Uniformity:** ≤ 2.0 dB
- **Polarization-dependent loss:** ≤ 0.4 dB
- **Insulation resistance:** $\geq 1000\text{M}\Omega / 500\text{V}$
- **Withstand voltage:** $\geq 3000\text{V (DC)}/1\text{min}$
- **Dimensions:** 400 mm (H) x 450 mm (L) x 100 mm (W)
- **Weight:** 6.4 kg

The Vertex Advantage

The Vertex Networks GigaBox FTTH is a high-capacity fiber optic main register designed for the organized deployment of fibers and optical cables. Constructed from a durable metal cabinet with an electrostatic lacquer coating, this robust register is suitable for wall mounting in both residential and commercial environments. The GigaBox provides essential protection for secure installation and ensures the fibers of the distribution network maintain a minimum bend radius. Featuring excellent performance specifications, including low insertion and return loss, this register operates efficiently within a temperature range of -40°C to $+85^{\circ}\text{C}$. The GigaBox FTTH is a reliable and versatile solution for high-density fiber optic distribution in buildings, ensuring safe, organized, and efficient network installations.